

3/32" = 1'  
0' 5'-4" 10'-8" 21'-4"

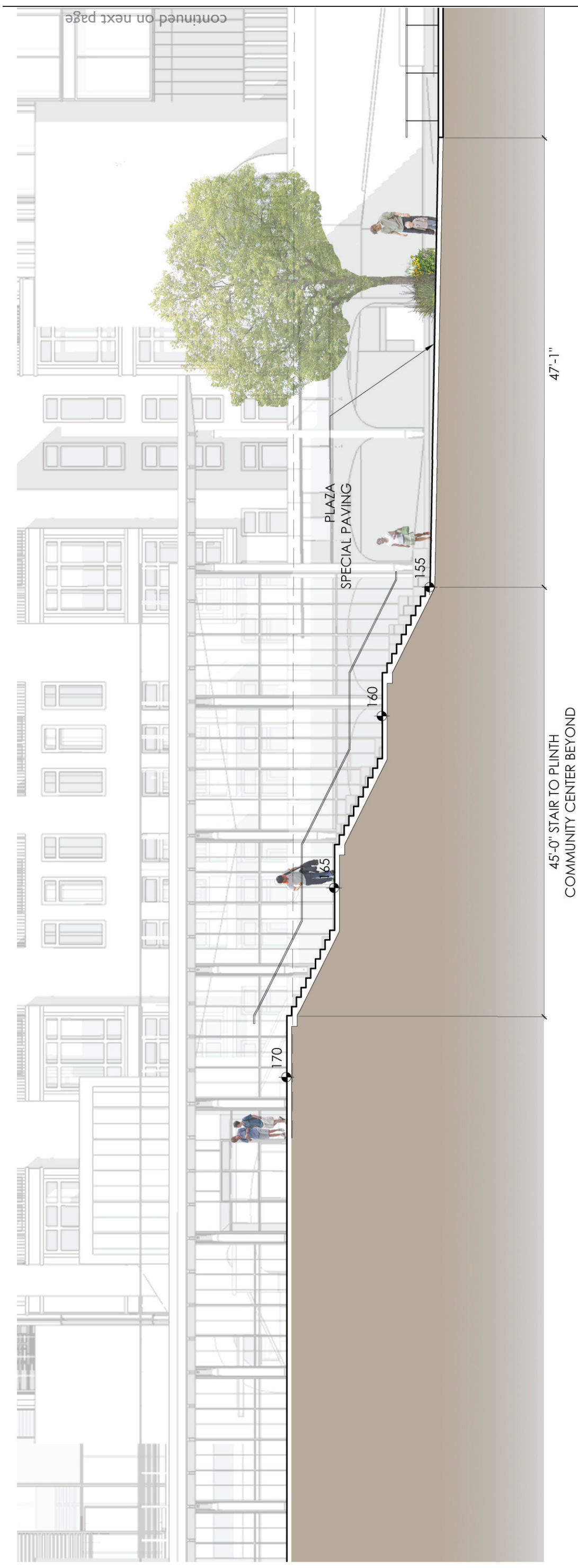


Continued on next page

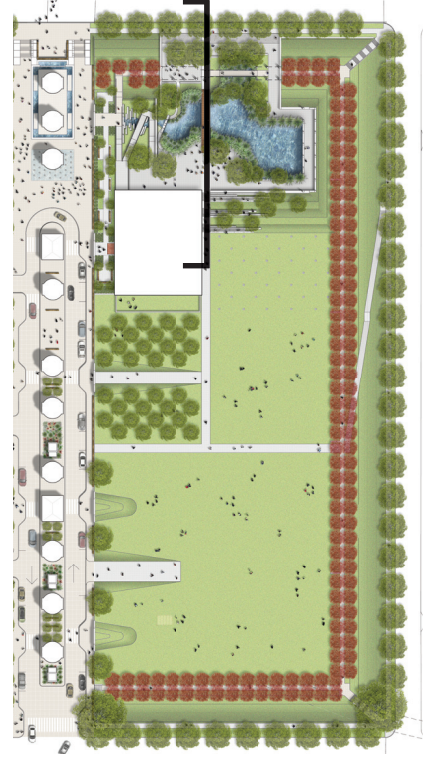


EAST/WEST SECTION - BRIDGE ACROSS POND AND STAIRS

3/32" = 1'  
 0' 5'-4" 10'-8" 21'-4"



continued on next page



3/32" = 1'  
0' 5'-4" 10'-8" 21'-4"



continued on next page





continued on next page

